

FLOW PRODUCTS

Fittings - Threaded Connectors

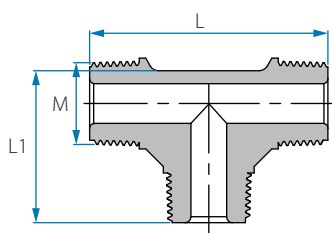
NYLON 6-6



Working pressure
Up to 14 BAR
(200 psi) at 20 °C



Temperature
-20 °C - 110 °C
(subject to application)



BSPT Pipe T

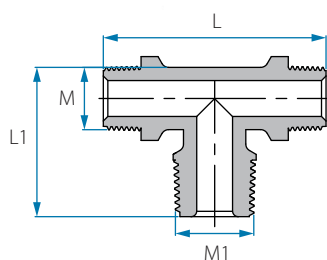
Cat. No.	M (BSPT)	L mm	L1 mm	Colour
12016402008	1/8"	39.8	24.1	Blue
12016404008	1/4"	44.0	26.2	
12016406008	3/8"	50.5	32.0	
12016408008	1/2"	64.0	40.3	

Note: Packing 25 unit

NPT Pipe T

Cat. No.	M (NPT)	L mm	L1 mm	Colour
12026402003	1/8"	39.3	24.0	Grey
12026404003	1/4"	48.4	28.5	

Note: Packing 25 unit



BSPT Pipe Reducing Branch T

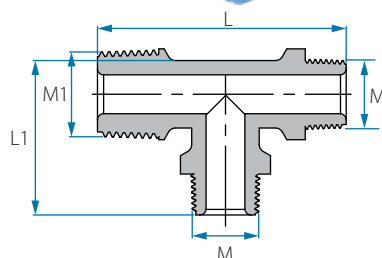
Cat. No.	M (BSPT)	M1 (BSPT)	L mm	L1 mm	Colour
12017102048	1/8"	1/4"	39.7	26.4	Blue
12017104028	1/4"	1/8"	43.3	24.2	
12017104068	1/4"	3/8"	43.3	38.2	
12017106048	3/8"	1/4"	60.2	26.4	
12017108068	1/2"	3/8"	64.2	38.2	
12017106088	3/8"	1/2"	60.2	40.4	

Note: Packing 25 unit

NPT Pipe Reducing Branch T

Cat. No.	M (BSPT)	M1 (BSPT)	L mm	L1 mm	Colour
12027104023	1/4"	1/8"	48.4	24.0	Grey

Note: Packing 25 unit



BSPT Pipe Reducing Run T

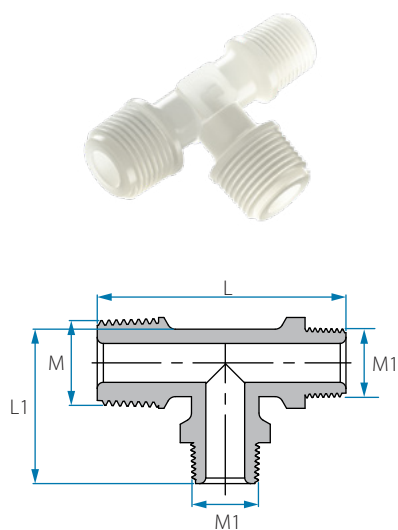
Cat. No.	M (BSPT)	M1 (BSPT)	L mm	L1 mm	Colour
12017204028	1/4"	1/8"	41.8	26.3	Blue
12017206048	3/8"	1/4"	48.3	30.8	
12017208068	1/2"	3/8"	62.0	40.0	
12017202048	1/8"	1/4"	42.7	25.5	
12017204068	1/4"	3/8"	48.5	31.0	
12017206088	3/8"	1/2"	62.0	38.2	

Note: Packing 25 unit

NPT Pipe Reducing Run T

Cat. No.	M (NPT)	M1 (NPT)	L mm	L1 mm	Colour
12027204023	1/4"	1/8"	41.8	26.3	Grey

Note: Packing 25 unit



BSPT Reducing Threaded Run T

Cat. No.	M (BSPT)	M1 (BSPT)	L mm	L1 mm	Colour
12057204021	1/4"	1/8"	41.8	26.3	○ White
12057206041	3/8"	1/4"	48.3	30.8	
12057208061	1/2"	3/8"	62.0	40.0	
12057202041	1/8"	1/4"	42.7	25.5	
12057204061	1/4"	3/8"	48.5	31.0	
12057206081	3/8"	1/2"	62.0	38.2	

Note: Packing 25 unit

NPT Reducing Threaded Run T

Cat. No.	M (NPT)	M1 (NPT)	L mm	L1 mm	Colour
12067204021	1/4"	1/8"	41.8	26.3	○ White

Note: Packing 25 unit

FLOW PRODUCTS

Fittings - PVDF

PVDF



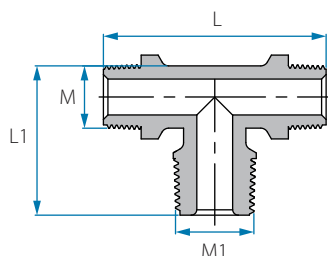
Working pressure
Up to 14 BAR
(200 psi) at 20 °C



Temperature
-20 °C - 120 °C
(subject to application)



Fittings' dimensions
refer to tube ID or OD, with respect to
the common application.



BSPT Reducing Threaded T

Cat. No.	M (BSPT)	M1 (BSPT)	L mm	L1 mm	Colour
12057102041	1/8"	1/4"	39.7	26.4	○ White
12057104021	1/4"	1/8"	43.3	24.2	
12057104061	1/4"	3/8"	38.2	43.3	
12057106041	3/8"	1/4"	60.2	26.4	
12057108061	1/2"	3/8"	64.2	38.2	
12057106081	3/8"	1/2"	60.2	40.4	

Note: Packing 25 unit

NPT Reducing Threaded T

Cat. No.	M (NPT)	M1 (NPT)	L mm	L1 mm	Colour
12067104021	1/4"	1/8"	48.4	24.0	○ White

Note: Packing 25 unit

FLOW PRODUCTS

Fittings - Barb Block

REINFORCED POLYPROPYLENE



Working pressure

Up to 14 BAR
(200 psi) at 20 °C

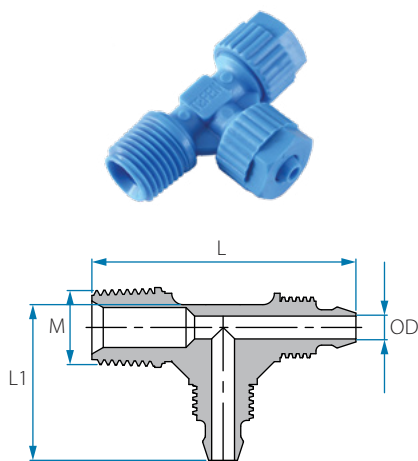


Temperature

4 °C - 90 °C
(subject to application)

Fittings' dimensions

↓ refer to tube ID or OD,
↑ with respect to the common application.



BSPT Male Run T

Cat. No.	OD mm	M (BSPT)	L mm	L1 mm	Colour
22047246028	6	1/8"	41.9	275	Blue
22047246048	6	1/4"	46.2	275	
22047248028	8	1/8"	41.9	275	
22047248048	8	1/4"	46.2	275	
22047248068	8	3/8"	58.8	43.2	
22047252048	12	1/4"	57.7	40.3	
22047252068	12	3/8"	59.0	40.5	
22047252088	12	1/2"	62.7	40.4	

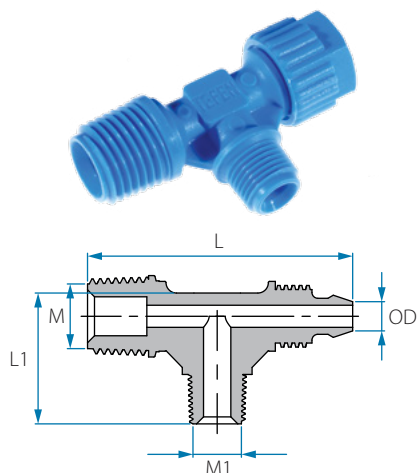
Cat. No.	OD inch	M (BSPT)	L mm	L1 mm	Colour
22047204028	1/4"	1/8"	41.9	275	Navy Blue
22047204048	1/4"	1/4"	46.2	275	
22047205028	5/16"	1/8"	41.9	275	
22047205048	5/16"	1/4"	46.2	275	
22047205068	5/16"	3/8"	58.8	43.2	
22047208048	1/2"	1/4"	57.7	40.3	
22047208068	1/2"	3/8"	59.0	40.5	
22047208088	1/2"	1/2"	62.7	40.4	
22047204041	1/4"	1/4"	46.2	275	White

Note: Packing 25 unit

NPT Male Run T

Cat. No.	OD inch	M (NPT)	L mm	L1 mm	Colour
22247204023	1/4"	1/8"	43.4	274	Grey
22247204043	1/4"	1/4"	48.2	274	
22247205023	5/16"	1/8"	43.5	274	
22247205043	5/16"	1/4"	48.3	274	
22247205063	5/16"	3/8"	56.1	40.2	

Note: Packing 25 unit



BSPT Male T - 2 threads

Cat. No.	OD mm	M inch	M1 inch	L mm	L1 mm	Colour
22047802048	8	1/4"	1/8"	46.2	22.6	Blue

Note: Packing 25 unit



Male Run T

Cat. No.	Tube OD mm	M (BSPT)	Colour
22007244022	4	1/8"	● Black
22007244042	4	1/4"	
22007246022	6	1/8"	
22007246042	6	1/4"	
22007248022	8	1/8"	
22007248042	8	1/4"	
22007250042	10	1/4"	
22007250062	10	3/8"	
22007252062	12	3/8"	
22007252082	12	1/2"	

Cat. No.	Tube OD inch	M (BSPT)	Colour
22007203022	3/16"	1/8"	● Black
22007203042	3/16"	1/4"	
22007204022	1/4"	1/8"	
22007204042	1/4"	1/4"	
22007205022	5/16"	1/8"	
22007205042	5/16"	1/4"	
22007206042	3/8"	1/4"	
22007206062	3/8"	3/8"	
22007208062	1/2"	3/8"	
22007208082	1/2"	1/2"	

Note: Packing 25 unit

* Minimum order 500 pcs

FLOW PRODUCTS

Fittings - PVDF

PVDF



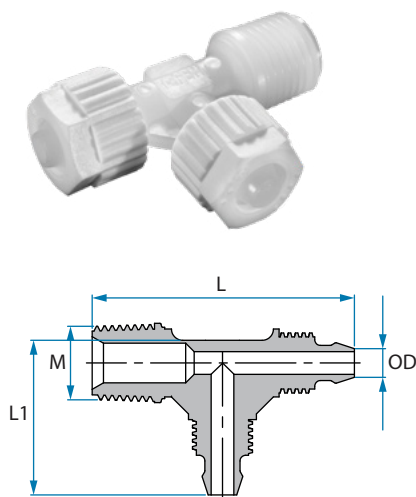
Working pressure
Up to 14 BAR
(200 psi) at 20 °C



Temperature
-20 °C - 120 °C
(subject to application)



Fittings' dimensions
refer to tube ID or OD, with respect to
the common application.



BSPT Barb Block Male Run T

Cat. No.	OD mm	M (BSPT)	L mm	L1 mm	Colour
22057246021	6	1/8"	41.9	275	○ White
22057246041	6	1/4"	46.2	275	
22057248021	8	1/8"	41.9	275	
22057248041	8	1/4"	46.2	275	
22057248061	8	3/8"	58.8	43.2	
22057252041	12	1/4"	57.7	40.3	
22057252061	12	3/8"	62.5	40.3	
22057252081	12	1/2"	62.7	40.4	

Cat. No.	OD inch	M (BSPT)	L mm	L1 mm	Colour
22057204021	1/4"	1/8"	41.9	275	○ White & Navy Blue
22057204041	1/4"	1/4"	46.2	275	
22057205021	5/16"	1/8"	41.9	275	
22057205041	5/16"	1/4"	46.2	275	
22057205061	5/16"	3/8"	58.8	43.2	
22057208041	1/2"	1/4"	57.7	40.3	
22057208061	1/2"	3/8"	62.5	40.3	
22057208081	1/2"	1/2"	62.7	40.4	

Note: Packing 25 unit

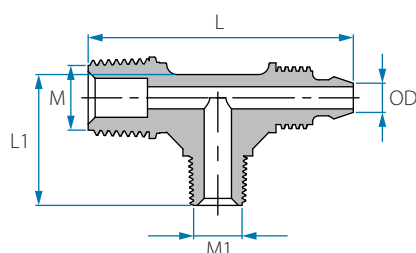
* Nuts material is Reinforced PP

NPT Male Barb Block Run T

Cat. No.	OD inch	M (NPT)	L mm	L1 mm	Colour
22257204021	1/4"	1/8"	43.4	274	○ White & Grey
22257204041	1/4"	1/4"	48.2	274	
22257205021	5/16"	1/8"	43.5	274	
22257205041	5/16"	1/4"	48.3	274	
22257205061	5/16"	3/8"	67.0	274	
22257208021	1/2"	1/8"	48.0	43.2	

Note: Packing 25 unit

* Nuts material is Reinforced PP

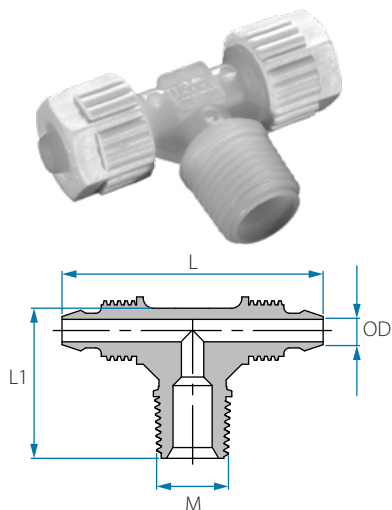


BSPT Male Barb Block T - 2 threads

Cat. No.	OD mm	M (BSPT)	M1 (BSPT)	L mm	L1 mm	Colour
22057802041	8	1/4"	1/8"	46.2	22.6	○ White

Note: Packing 25 unit

* Nuts material is Reinforced PP



BSPT Male Barb Block Branch T

Cat. No.	OD mm	M (BSPT)	L mm	L1 mm	Colour
22057146021	6	1/8"	46.8	22.6	○ White
22057146041	6	1/4"	46.8	26.8	
22057148021	8	1/8"	46.8	22.6	
22057148041	8	1/4"	46.8	26.8	
22057148061	8	3/8"	47.2	29.4	
22057152041	12	1/4"	67.0	31.6	
22057152061	12	3/8"	67.0	32.0	
22057152081	12	1/2"	67.0	36.0	

Cat. No.	OD inch	M (BSPT)	L mm	L1 mm	Colour
22057104021	1/4"	1/8"	46.8	22.6	◐ White & Navy Blue
22057104041	1/4"	1/4"	46.8	26.8	
22057105021	5/16"	1/8"	46.8	22.6	
22057105041	5/16"	1/4"	46.8	26.8	
22057105061	5/16"	3/8"	47.2	29.4	
22057108041	1/2"	1/4"	67.0	31.6	
22057108061	1/2"	3/8"	67.0	32.0	

Note: Packing 25 unit

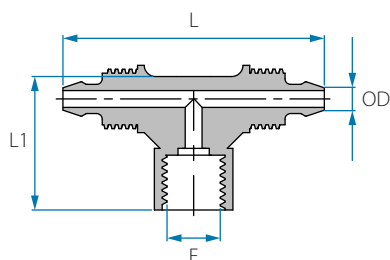
* Nuts material is Reinforced PP

NPT Male Barb Block Branch T

Cat. No.	OD inch	M (NPT)	L mm	L1 mm	Colour
22257104021	1/4"	1/8"	47.7	24.1	◐ White & Grey
22257104041	1/4"	1/4"	46.6	28.9	
22257105021	5/16"	1/8"	47.7	24.1	
22257105041	5/16"	1/4"	46.7	28.9	
22257108061	1/2"	3/8"	67.1	32.1	
22257108081	1/2"	1/2"	67.1	35.8	

Note: Packing 25 unit

* Nuts material is Reinforced PP



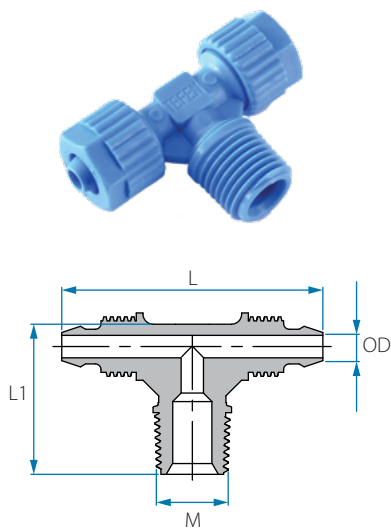
BSPT Female Branch Barb Block Connector

Cat. No.	OD mm	F (BSPT)	L mm	L1 mm	Colour
22057346021	6	1/8"	46.6	25.0	○ White
22057348041	8	1/4"	46.8	28.9	

Cat. No.	OD inch	F (BSPT)	L mm	L1 mm	Colour
22057304021	1/4"	1/8"	46.6	25.0	◐ White & Navy Blue
22057305041	5/16"	1/4"	46.8	27.2	

Note: Packing 25 unit

* Nuts material is Reinforced PP



BSPT Male Branch T

Cat. No.	OD mm	M (BSPT)	L mm	L1 mm	Colour
22047146028	6	1/8"	46.8	22.6	Blue
22047146048	6	1/4"	46.8	26.8	
22047148028	8	1/8"	46.8	22.6	
22047148048	8	1/4"	46.8	26.8	
22047148068	8	3/8"	47.2	29.4	
22047152048	12	1/4"	67.0	31.6	
22047152068	12	3/8"	67.0	32.0	
22047152088	12	1/2"	67.0	36.0	
22047146042	6	1/4"	46.8	26.8	Black
22047148022	8	1/8"	46.8	22.6	
22047148042	8	1/4"	46.8	26.8	

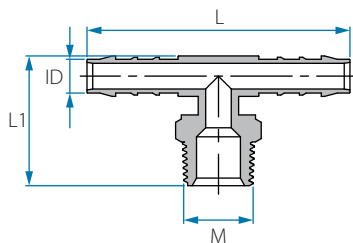
Cat. No.	OD inch	M (BSPT)	L mm	L1 mm	Colour
22047104028	1/4"	1/8"	46.8	22.6	Navy Blue
22047104048	1/4"	1/4"	46.8	26.8	
22047105028	5/16"	1/8"	46.8	22.6	
22047105048	5/16"	1/4"	46.8	26.8	
22047105068	5/16"	3/8"	47.2	29.4	
22047108048	1/2"	1/4"	67.0	31.6	
22047108068	1/2"	3/8"	67.0	32.0	
22047104041	1/4"	1/4"	46.8	26.8	White

Note: Packing 25 unit

NPT Male Branch T

Cat. No.	OD inch	M (NPT)	L mm	L1 mm	Colour
22247104023	1/4"	1/8"	47.7	24.1	Grey
22247104043	1/4"	1/4"	46.6	28.9	
22247105023	5/16"	1/8"	46.7	24.1	
22247105043	5/16"	1/4"	46.7	28.9	
22247108063	1/2"	3/8"	66.8	32.0	
22247108083	1/2"	1/2"	66.8	36.1	
22247105022	5/16"	1/8"	46.7	24.1	Black

Note: Packing 25 unit



NPT Male Branch T Hose Connector

Cat. No.	ID inch	M (NPT)	L mm	L1 mm	Colour
12257102023	5/32"	1/8"	45.1	26.0	Grey
12257102043	5/32"	1/4"	45.1	30.7	
12257103023	3/16"	1/8"	56.3	28.6	
12257103043	3/16"	1/4"	56.3	33.4	
12257103083	3/16"	1/2"	56.3	39.3	
12257104023	1/4"	1/8"	63.0	29.4	
12257104043	1/4"	1/4"	63.0	33.8	
12257104063	1/4"	3/8"	63.0	33.7	
12257104083	1/4"	1/2"	63.0	40.3	
12257105023	5/16"	1/8"	72.5	32.3	
12257105043	5/16"	1/4"	72.5	36.8	
12257105063	5/16"	3/8"	72.5	36.9	
12257105083	5/16"	1/2"	72.5	42.8	
12257106043	3/8"	1/4"	78.5	38.0	
12257106063	3/8"	3/8"	78.5	37.7	
12257106083	3/8"	1/2"	78.5	44.0	
12257106123	3/8"	3/4"	78.5	43.8	
12257108043	1/2"	1/4"	82.6	39.3	
12257108063	1/2"	3/8"	82.6	38.8	
12257108083	1/2"	1/2"	82.6	45.5	
12257108123	1/2"	3/4"	82.6	45.5	
12257109063	9/16"	3/8"	85.2	42.6	
12257109083	9/16"	1/2"	85.2	48.3	
12257109123	9/16"	3/4"	85.2	48.3	
12257110083	5/8"	1/2"	88.4	51.5	
12257110123	5/8"	3/4"	88.4	51.1	
12257112083	3/4"	1/2"	90.5	53.0	
12257112123	3/4"	3/4"	90.5	52.5	

Note: Packing 25 unit

FLOW PRODUCTS

Fittings - PVDF

PVDF



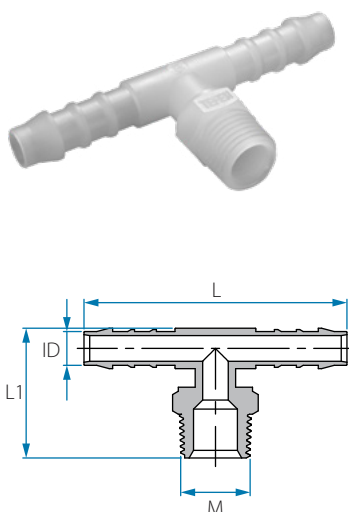
Working pressure
Up to 14 BAR
(200 psi) at 20 °C



Temperature
-20 °C - 120 °C
(subject to application)



Fittings' dimensions
refer to tube ID or OD, with respect to
the common application.



NPT Male Branch T Hose Connector

Cat. No.	ID inch	M (NPT)	L mm	L1 mm	Colour
12357102021	5/32"	1/8"	45.1	26.0	○ White
12357102041	5/32"	1/4"	45.1	30.7	
12357103021	3/16"	1/8"	56.3	28.6	
12357103041	3/16"	1/4"	56.3	33.4	
12357103081	3/16"	1/2"	56.3	39.3	
12357104021	1/4"	1/8"	63.0	29.4	
12357104041	1/4"	1/4"	63.0	33.8	
12357104061	1/4"	3/8"	63.0	33.7	
12357104081	1/4"	1/2"	63.0	40.3	
12357105021	5/16"	1/8"	72.5	32.3	
12357105041	5/16"	1/4"	72.5	36.8	
12357105061	5/16"	3/8"	72.5	36.9	
12357105081	5/16"	1/2"	72.5	42.8	
12357106041	3/8"	1/4"	78.5	38.0	
12357106061	3/8"	3/8"	78.5	37.7	
12357106081	3/8"	1/2"	78.5	44.0	
12357106121	3/8"	3/4"	78.5	43.8	
12357108041	1/2"	1/4"	82.6	39.3	
12357108061	1/2"	3/8"	82.6	38.8	
12357108081	1/2"	1/2"	82.6	45.5	
12357108121	1/2"	3/4"	82.6	45.5	
12357109061	9/16"	3/8"	85.2	42.6	
12357109081	9/16"	1/2"	85.2	48.3	
12357109121	9/16"	3/4"	85.2	48.3	
12357110081	5/8"	1/2"	88.4	51.5	
12357110121	5/8"	3/4"	88.4	51.1	
12357112081	3/4"	1/2"	90.5	53.0	
12357112121	3/4"	3/4"	90.5	52.5	

Note: Packing 25 unit

FLOW PRODUCTS

Fittings - Hose Fittings

NYLON 6-6



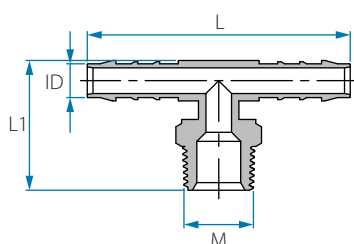
Working pressure
Up to 14 BAR
(200 psi) at 20 °C



Temperature
-20 °C - 110 °C
(subject to application)



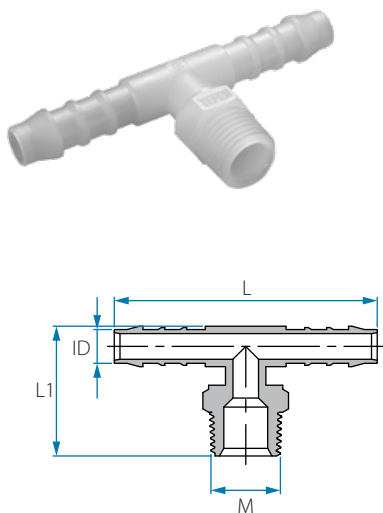
Fittings' dimensions
refer to tube ID or OD, with respect to
the common application.



BSPT Male Branch T Hose Connector

Cat. No.	ID mm	M (BSPT)	L mm	L1 mm	Colour
12447144028	4	1/8"	39.4	22.2	Blue
12447144048	4	1/4"	45.2	27.0	
12447145028	5	1/8"	50.9	23.8	
12447145048	5	1/4"	56.5	29.6	
12447146028	6	1/8"	55.8	24.8	
12447146048	6	1/4"	63.1	30.0	
12447146068	6	3/8"	63.1	30.0	
12447146088	6	1/2"	63.1	33.8	
12447148028	8	1/8"	61.7	27.3	
12447148048	8	1/4"	72.7	33.1	
12447148068	8	3/8"	72.7	33.1	
12447148088	8	1/2"	61.8	33.9	
12447150048	10	1/4"	78.7	34.1	
12447150068	10	3/8"	78.7	34.1	
12447150088	10	1/2"	78.9	38.1	
12447150128	10	3/4"	78.9	39.1	
12447152048	12	1/4"	82.7	35.2	
12447152068	12	3/8"	82.7	35.2	
12447152088	12	1/2"	82.6	39.1	
12447152128	12	3/4"	82.6	40.0	
12447154068	14	3/8"	85.6	38.5	
12447154088	14	1/2"	85.6	42.1	
12447154128	14	3/4"	85.6	43.3	
12447156088	16	1/2"	88.2	45.0	
12447156128	16	3/4"	88.5	46.3	
12447159088	19	1/2"	90.3	46.3	
12447159128	19	3/4"	90.7	47.7	

Note: Packing 25 unit



BSPT Male Branch T Hose Connector

Cat. No.	ID mm	M (BSPT)	L mm	L1 mm	Colour
12557144021	4	1/8"	39.4	22.2	○ White
12557144041	4	1/4"	45.2	27.0	
12557145021	5	1/8"	50.9	23.8	
12557145041	5	1/4"	56.5	29.6	
12557146021	6	1/8"	55.8	24.8	
12557146041	6	1/4"	63.1	30.0	
12557146061	6	3/8"	63.1	30.0	
12557146081	6	1/2"	63.1	33.8	
12557148021	8	1/8"	61.7	27.3	
12557148041	8	1/4"	72.7	33.1	
12557148061	8	3/8"	72.7	33.1	
12557148081	8	1/2"	61.8	33.9	
12557150041	10	1/4"	78.7	34.1	
12557150061	10	3/8"	78.7	34.1	
12557150081	10	1/2"	78.9	38.1	
12557150121	10	3/4"	78.9	39.1	
12557152041	12	1/4"	82.7	35.2	
12557152061	12	3/8"	82.7	35.2	
12557152081	12	1/2"	82.6	39.1	
12557152121	12	3/4"	82.6	40.0	
12557154061	14	3/8"	85.6	38.5	
12557154081	14	1/2"	85.6	42.1	
12557154121	14	3/4"	85.6	43.3	
12557156081	16	1/2"	88.2	45.0	
12557156121	16	3/4"	88.5	46.3	
12557159081	19	1/2"	90.3	46.3	
12557159121	19	3/4"	90.7	47.7	

Note: Packing 25 unit

FLOW PRODUCTS

Fittings - Hose Fittings

NYLON 6-6



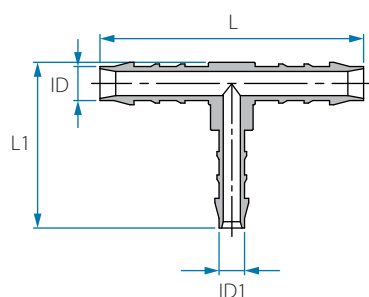
Working pressure
Up to 14 BAR
(200 psi) at 20 °C



Temperature
-20 °C - 110 °C
(subject to application)



Fittings' dimensions
refer to tube ID or OD, with respect to
the common application.



Reducing T Hose Connector

Cat. No.	ID mm	ID1 mm	L mm	L1 mm	Colour
12447245448	5	4	50.7	25.7	Blue
12447246458	6	5	55.7	31.8	
12447248468	8	6	61.5	36.2	
12447250488	10	8	66.5	39.3	
12447252508	12	10	70.6	44.5	
12447254528	14	12	76.7	44.5	
12447256548	16	14	79.5	51.1	
12447259568	19	16	84.6	55.4	

Note: Packing 25 unit

Cat. No.	ID inch	ID1 inch	L mm	L1 mm	Colour
12257203023	3/16"	5/32"	50.6	25.9	Grey
12257204033	1/4"	3/16"	55.8	32.0	
12257205043	5/16"	1/4"	61.5	36.2	
12257206053	3/8"	5/16"	66.5	39.3	
12257208063	1/2"	3/8"	70.3	43.5	
12257209083	9/16"	1/2"	76.3	48.0	
12257210093	5/8"	9/16"	79.4	51.0	
12257212103	3/4"	5/8"	84.3	55.2	

Note: Packing 25 unit

FLOW PRODUCTS

Fittings - PVDF

PVDF



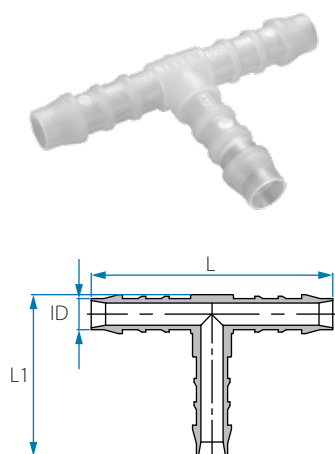
Working pressure
Up to 14 BAR
(200 psi) at 20 °C



Temperature
-20 °C - 120 °C
(subject to application)



Fittings' dimensions
refer to tube ID or OD, with respect to
the common application.

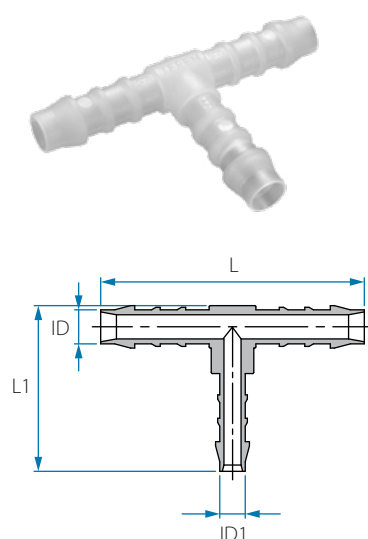


Union T Hose Connector

Cat. No.	ID mm	L mm	L1 mm	Colour
12556444441	4	39.5	24.3	○ White
12556445451	5	50.7	30.8	
12556446461	6	55.8	34.0	
12556448481	8	61.7	38.5	
12556450501	10	66.5	41.2	
12556452521	12	70.5	44.8	
12556454541	14	76.3	49.1	
12556456561	16	79.2	52.1	
12556459591	19	84.4	55.7	

Cat. No.	ID inch	L mm	L1 mm	Colour
12356402021	5/32"	39.4	24.3	○ White
12356403031	3/16"	50.6	30.9	
12356404041	1/4"	55.7	34.1	
12356405051	5/16"	61.2	38.2	
12356406061	3/8"	66.5	41.4	
12356408081	1/2"	70.8	45.0	
12356409091	9/16"	76.3	49.1	
12356410101	5/8"	78.7	51.4	
12356412121	3/4"	83.8	55.9	

Note: Packing 25 unit



Reducing T Hose Connector

Cat. No.	ID mm	ID1 mm	L mm	L1 mm	Colour
12557245441	5	4	50.7	25.7	○ White
12557246451	6	5	55.7	31.8	
12557248461	8	6	61.5	36.2	
12557250481	10	8	66.5	39.3	
12557252501	12	10	70.6	44.5	
12557254521	14	12	76.7	44.5	
12557256541	16	14	79.5	51.1	
12357259561	19	16	84.6	55.4	

Cat. No.	ID inch	ID1 inch	L mm	L1 mm	Colour
12357203021	3/16"	5/32"	50.6	25.9	○ White
12357204031	1/4"	3/16"	55.8	32.0	
12357205041	5/16"	1/4"	61.5	36.2	
12357206051	3/8"	5/16"	66.5	39.3	
12357208061	1/2"	3/8"	70.3	43.5	
12357209081	9/16"	1/2"	76.3	48.0	
12357210091	5/8"	9/16"	79.4	51.0	
12357212101	3/4"	5/8"	84.3	55.2	

Note: Packing 25 unit