

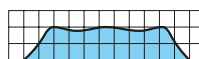
Standard Type Full Cone Spray Nozzles

JJXP-PP JJXP-PVDF

Full Cone



[Spray pattern]



[Spray distribution]

[Features]

- Full cone spray pattern with a round impact area and uniform distribution.
- X-shaped whirler provides large free passage diameter, minimizing clogging.

[Standard pressure]

0.2 MPa

[Applications]

Cleaning: Machinery, screens, tanks, crushed stones, earth and sand

Cooling: Machinery, tanks

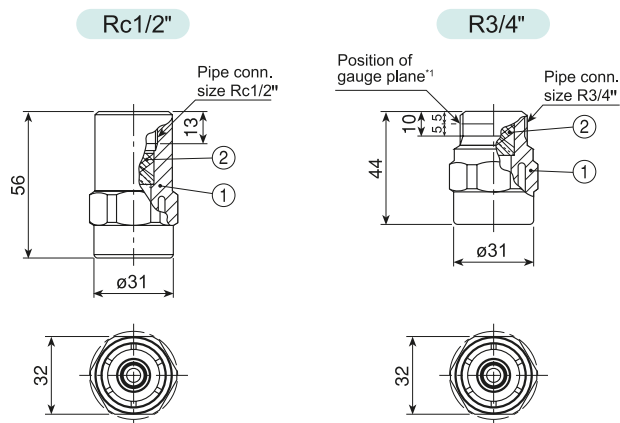
Spraying: Waste water treatment, aeration, foam breaking, dust suppression, etching, chemicals

JJXP-PP series

	JJXP-PP series
Structure	• One-piece structure with a press-fit X-shaped whirler.
Material	• PP
Mass	<ul style="list-style-type: none"> • Rc1/2": 25.3 g • R3/4": 17.9 g

*1) Please note that the position of standard diameter for male thread type has been changed.

[Note] Appearance and dimensions may differ slightly depending on materials and nozzle codes.



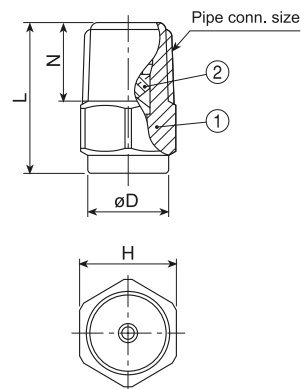
①Nozzle body ②Whirler

JJXP-PVDF series

	JJXP-PVDF series
Structure	• One-piece structure with a press-fit X-shaped whirler.
Material	• PVDF

Pipe conn. size	Dimensions (mm)				Mass (g)
	L	H	øD	N	
R1/8	18	12	11	8	2.2
R1/4	22	14	12	11.5	4.1

[Note] Appearance and dimensions may differ slightly depending on materials and nozzle codes.



①Nozzle body ②Whirler

Standard Type Full Cone Spray Nozzles JJXP-PP/JJXP-PVDF series

■ JJXP-PP series

Spray capacity code	Pipe conn. size		Spray angle (°)			Spray capacity (ℓ/min)									Mean droplet diameter (μm)	Free passage diameter (mm)
	Rc1/2	R3/4	0.05 MPa	0.2 MPa	0.5 MPa	0.03 MPa	0.05 MPa	0.1 MPa	0.15 MPa	0.2 MPa	0.3 MPa	0.5 MPa	0.7 MPa	1 MPa		
2*100/																
12	○	○	96	100	92	5.03	6.35	8.73	10.5	12.0	14.2	17.4	20.0	23.1	570	3.1
13	○	○	96	100	92	5.44	6.88	9.46	11.4	13.0	15.3	18.9	21.7	25.1		3.1
14	○	○	96	100	92	5.86	7.41	10.2	12.3	14.0	16.5	20.3	23.3	27.0		3.5
15	○	○	96	100	92	6.28	7.94	10.9	13.1	15.0	17.7	21.8	25.0	28.9	}	3.5
16	○	○	96	100	92	6.70	8.47	11.6	14.0	16.0	18.9	23.3	26.7	30.9		3.5
18	○	○	96	100	92	7.54	9.53	13.1	15.8	18.0	21.2	26.2	30.0	34.7		3.5
20	○	○	96	100	92	8.38	10.6	14.6	17.5	20.0	23.6	29.1	33.4	38.6	740	3.5

[Note] JJXP-PP with spray capacity code of 12–16 are guaranteed to within 0 to +10% of the rated spray capacity under the standard pressure.

■ JJXP-PVDF series

Spray capacity code	Pipe conn. size		Spray angle (°)			Spray capacity (ℓ/min)									Mean droplet diameter (μm)	Free passage diameter (mm)
	R1/8	R1/4	0.05 MPa	0.2 MPa	0.5 MPa	0.03 MPa	0.05 MPa	0.1 MPa	0.15 MPa	0.2 MPa	0.3 MPa	0.5 MPa	0.7 MPa	1 MPa		
010	○	○	60	65	55	—	0.53	0.73	0.88	1.00	1.18	1.45	1.67	1.93	290	0.8
015	○	○	60	65	55	—	0.79	1.09	1.32	1.50	1.77	2.18	2.50	2.89		1.0
020	○	○	60	65	55	—	1.06	1.46	1.75	2.00	2.36	2.91	3.34	3.86	}	1.5
025	○	○	60	65	55	—	1.32	1.82	2.20	2.50	2.95	3.62	4.17	4.82		1.5
030	○	○	60	65	55	—	1.59	2.18	2.63	3.00	3.54	4.36	5.00	5.79	410	1.5

How to order

Please inquire or order for a specific nozzle using this coding system.

① JJXP-PP series

〈Example〉 1/2F JJXP 2*100/14 PP

1/2F JJXP 2*100/ 14 PP

Pipe conn. size*2

■ 1/2F
■ 3/4M

Spray capacity code

■ 12
}
■ 20

② JJXP-PVDF series

〈Example〉 1/8M JJXP 010 PVDF

1/8M JJXP 010 PVDF

Pipe conn. size*2

■ 1/8M
■ 1/4x1/8M

Spray capacity code

■ 010
}
■ 030

*2) "M" indicates male thread ("R" of the ISO standard) and "F" indicates female thread ("Rc" of the ISO standard), e.g. 1/8M = R1/8".
Pipe connection size for R1/4" is indicated as "1/4x1/8M" in JJXP-PVDF series.