



- Air nozzle made of stainless steel S303 with high resistance to temperature, abrasion and corrosion.
- 4 models available with different blowing powers.
- Designed for precision blowing, it achieves a solid stream jet blow by concentrating all the power at one point.
- Designed for accuracy in hard to reach areas.



Material
S303



Pressure
1 MPa
ca. 10 bar



Maximum
temperature
400 °C



Thread
connection
1/8" male



Weight
7.2 g



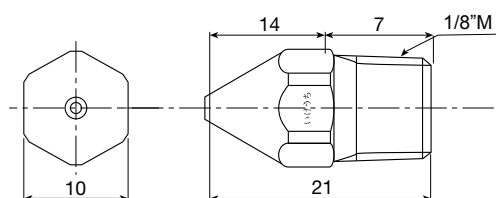
Product code
1/8M CCP 1.0A S303
1/8M CCP 1.5A S303
1/8M CCP 2.0A S303
1/8M CCP 2.5A S303

Blowing pattern

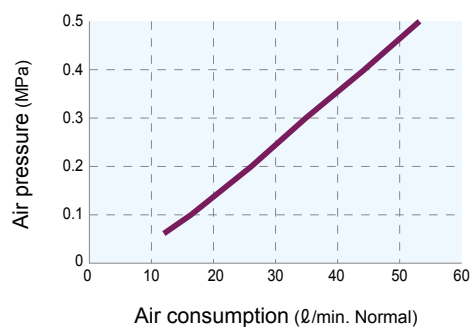
Solid stream jet blow



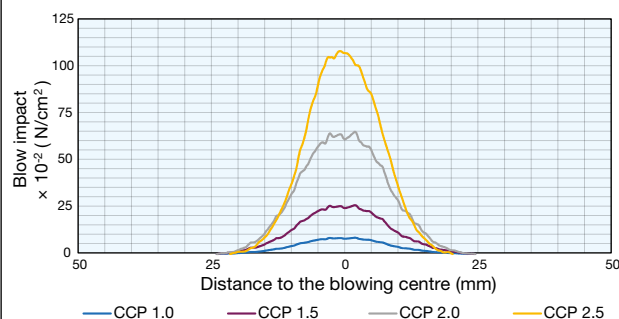
Dimensions (mm)



Orifice diameter Ø 1.0 mm



Blowing power (0.5 MPa - ca. 5 bar)



| Ø Orifice diameter (Code) | Force (N) (0.5 MPa - ca. 5 bar) | Air consumption (ℓ /min. Normal) | | | | | Orifice diameter (mm) | dB (A) |
|---------------------------|---------------------------------|----------------------------------|---------|---------|---------|---------|-----------------------|--------|
| | | 0.1 MPa | 0.2 MPa | 0.3 MPa | 0.4 MPa | 0.5 MPa | | |
| Ø1.0A | 0.5 | 17 | 26 | 35 | 44 | 53 | 1.0 | 71 |
| Ø1.5A | 1.1 | 40 | 60 | 80 | 100 | 120 | 1.5 | 77 |
| Ø2.0A | 2.0 | 70 | 104 | 138 | 172 | 206 | 2.0 | 83 |
| Ø2.5A | 3.1 | 109 | 162 | 215 | 268 | 321 | 2.5 | 89 |

*Standard data at 0.5 MPa (ca. 5 bar).

- Air nozzle made of stainless steel S303 with high resistance to temperature, abrasion and corrosion.
- 4 models available with different blowing powers.
- Designed for precision blowing, it achieves a solid stream jet blow by concentrating all the power at one point.
- Designed for accuracy in areas of difficult access.



Material
S303



Pressure
1 MPa
ca. 10 bar



Maximum
temperature
400 °C



Thread
connection
1/4" male



Weight
19 g



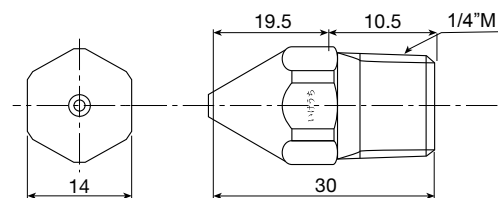
Product code
1/4M CCP 1.0A S303
1/4M CCP 1.5A S303
1/4M CCP 2.0A S303
1/4M CCP 2.5A S303

Blowing pattern

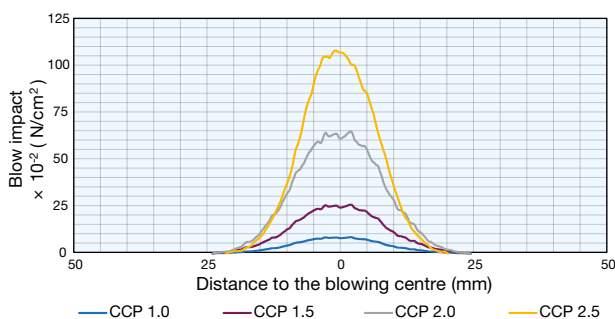
Solid stream jet blow



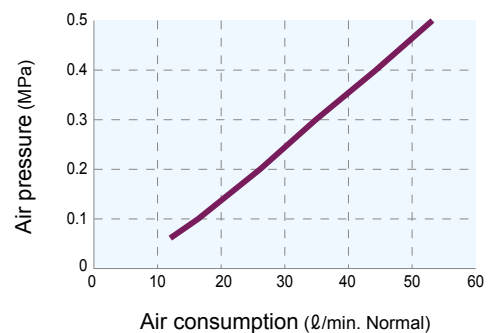
Dimensions (mm)



Blowing power (0.5 MPa - ca. 5 bar)



Orifice diameter Ø 1.0 mm



| Ø Orifice diameter (Code) | Force (N) (0.5 MPa - ca. 5 bar) | Air consumption (l /min. Normal) | | | | | Orifice diameter (mm) | dB (A) |
|---------------------------|---------------------------------|----------------------------------|---------|---------|---------|---------|-----------------------|--------|
| | | 0.1 MPa | 0.2 MPa | 0.3 MPa | 0.4 MPa | 0.5 MPa | | |
| Ø1.0A | 0.5 | 17 | 26 | 35 | 44 | 53 | 1.0 | 71 |
| Ø1.5A | 1.1 | 40 | 60 | 80 | 100 | 120 | 1.5 | 77 |
| Ø2.0A | 2.0 | 70 | 104 | 138 | 172 | 206 | 2.0 | 83 |
| Ø2.5A | 3.1 | 109 | 162 | 215 | 268 | 321 | 2.5 | 89 |

*Standard data at 0.5 MPa (ca. 5 bar).



"The Fog Engineers"
IKEUCHI EUROPE B.V.